

 ATP
250 WTA
500 ADELAIDE
SOUTH AUSTRALIA

EPIC IS SERVED

ADELAIDE
INTERNATIONAL

ADELAIDE INTERNATIONAL 2023 | CORPORATE HOSPITALITY FAQ'S

The Adelaide International is back for 2023, with not one, but TWO tournaments. That's right, double the players, double the action, double the finals fever as some of the world's best players battle it out under the roof at The Drive.

The first event will be hosted from 1 to 8 January and will feature a WTA 500 and ATP 250 combined tournament, followed by the second Adelaide International event, a WTA 500 and ATP 250 tournament from 9 to 14 January.

Entry Gates

All valid ticket holders and Corporate Suite ticket holders will be able to access the event via the main entrance located on Memorial Drive.

All entrances accommodate wheelchair access.

Arrival

All guests must present a ticket upon arrival for entry. Guests will be issued with a wristband to be worn for the entirety of the session to enable re-entry. Wristbands are non-transferable as they enable access into the exclusive areas.

Session Times

SESSION TIMES | WEEK 1 | 1 - 8 January 2023

DAY SESSIONS | Sunday 1 January – Friday 6 January

Gates Open: 10.00am

The Sideline Suite Opens: 10.00am – Bar Opens 11.00am

The Courtside Room Opens: 10.00am – Bar Opens 11.00am

Match Starts: 11.00am

DAY SESSION | Saturday 7 January

Gates Open: 11.00am

The Sideline Suite Opens: 11.30am – Bar Opens 11.30am

The Courtside Room Opens: 11.30am – Bar Opens 11.30am

Match Starts: 12.00pm

NIGHT SESSIONS | Monday 2 January – Saturday 7 January

Gates Open: 5.00pm

The Sideline Suite Opens: 6.00pm | Bar Opens 6.00pm

The Courtside Room Opens: 6.00pm | Bar Opens 6.00pm

Match Starts: 6.30pm

TWILIGHT SESSION | Sunday 8 January

Gates Open: 1.00pm

The Sideline Suite Opens: 1.30pm – Bar Opens 1.30pm

The Courtside Room Opens: 1.30pm – Bar Opens 1.30pm

Match Starts: 2.00pm

SESSION TIMES | WEEK 2 | 9 - 14 January 2023

DAY SESSIONS | Monday 9 January – Thursday 12 January

Gates Open: 10.00am

The Sideline Suite Opens: 10.00am – Bar Opens 11.00am

The Courtside Room Opens: 10.00am – Bar Opens 11.00am

Match Starts: 11.00am

DAY SESSION | Friday 13 January

Gates Open: 11.00am

The Sideline Suite Opens: 11.30am – Bar Opens 11.30am

The Courtside Room Opens: 11.30am – Bar Opens 11.30am

Match Starts: 12.00pm

NIGHT SESSIONS | Monday 9 January – Friday 13 January

Gates Open: 5.00pm

The Sideline Suite Opens: 6.00pm | Bar Opens 6.00pm

The Courtside Room Opens: 6.00pm | Bar Opens 6.00pm

Match Starts: 6.30pm

TWILIGHT SESSION | Saturday 14 January

Gates Open: 1.00pm

The Sideline Suite Opens: 1.30pm – Bar Opens 1.30pm

The Courtside Room Opens: 1.30pm – Bar Opens 1.30pm

Match Starts: 2.00pm

Session Information

Please note that the event runs a day session and night session from Sunday 1 January to Saturday 7 January (Week 1) and Monday 9 January to Friday 13 January (Week 2). It is not uncommon for day sessions to run late as this is a competitive event. Gates open for your guests to enter the venue including the centre court area at 5:00pm. The Sideline Suite and Courtside Room opens at 6:00pm. If day session matches are still in progress past 6:00pm then your guests are welcome to walk the complex including the outside courts where players may be practicing and matches may still be operating. They are also welcome to have a drink in the public bars. Once the day session is completed the venue will require 10-15 minutes to clean and re-set the corporate facility for the comfort of your guests. Note: this is only for the night session and if matches run past 6:00pm for the day session.

Locations

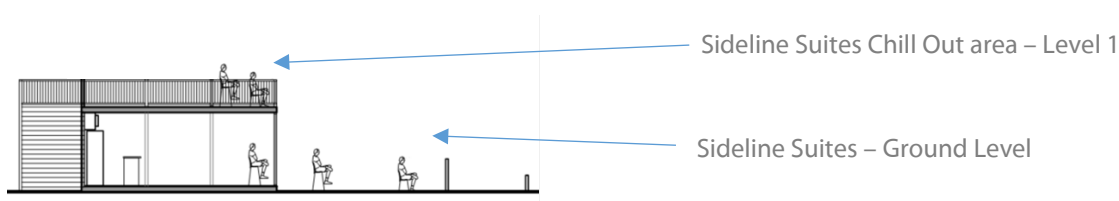
The Sideline Suites

We look forward to welcoming you to our Sideline Suites, our premium seating area located on the West side of centre court.

The Sideline Suites comprise of two levels:

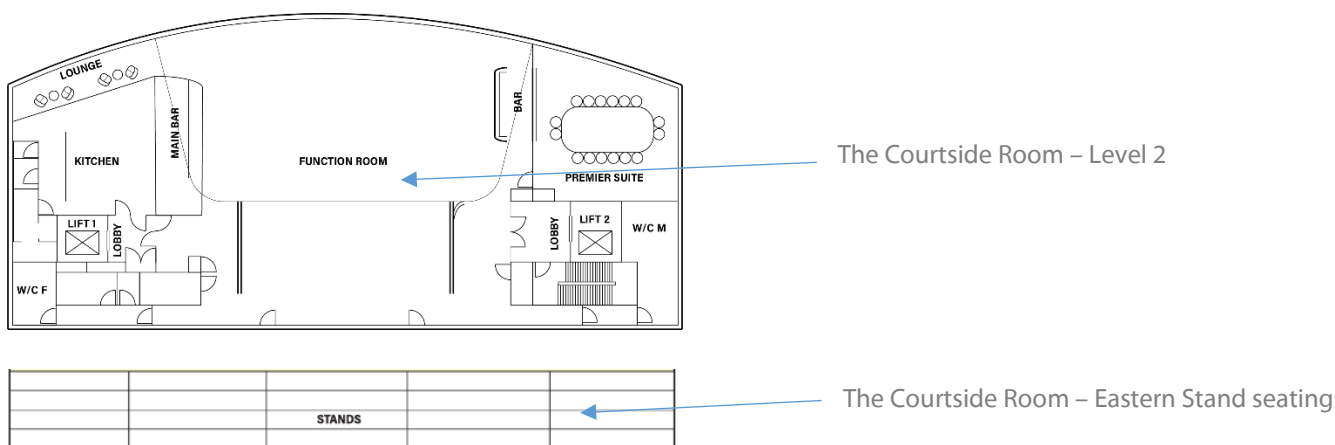
- Sideline Suites (Ground level)
- Chill out area (Level 1)

You will have access to an exclusive indoor air-conditioned bar and top-level chill out area. This prime location overlooks all the action on centre court and are the place to be this summer.



The Courtside Room

This exclusive function space offers a premium viewing experience overlooking the East of the City to the Adelaide Hills and the beautiful Riverbank. Your ticket will get you premium seating in the brand new Eastern Stand and allow access to the exclusive bar inside The Courtside Room.



Dress Code

Smart Casual

Cloakroom Facilities

Cloaking facilities are not available at The Drive. Items prohibited at the The Drive cannot enter the venue. Please take time to review the list of prohibited items. This list can be found in the Adelaide International Conditions of Sale and Entry. If in doubt, leave it at home.

Pass-outs

Pass-outs will be allowed. Please ensure that you retain your valid event ticket as you will be required to scan your event ticket on exit and again on re-entry.

First Aid

First Aid will be available on site.

Toilets

Toilets are located at various positions around The Drive. Please bear in mind that toilets are only accessible after gates open.

ATM/EFTPOS Facilities

ATMs located on the Adelaide Oval Telstra Plaza. There are no ATMs within the The Drive.

No Smoking Venue

Memorial Drive Tennis Centre is a non-smoking venue. There are limited designated smoking areas available outside the venue. Please ensure you receive a pass-out to ensure re-entry is permitted.

Bags

Bags may be subject to a random safety and security search upon entry. Please remember bags too large to fit under a seat cannot be brought into The Drive.

Weather

The Adelaide International is an outdoor event. It is recommended that patrons bring appropriate protection from sun and rain (i.e. hats, sunscreen, raincoats and warm clothing) even if seated inside corporate facilities.

Prohibited Items

For the comfort and safety of patrons and players the following items are not allowed into The Drive:

- Alcohol; animals except service animals (e.g. seeing eye dogs);
- any item that could be used as a weapon;
- beach balls and other inflatable devices, audio recorders;
- bicycles, scooters, skateboards and roller-blades/skates;
- camera tripods, monopods, telephoto camera lenses with a focal length capacity of greater than 200 mm;
- video cameras and handy-cams;
- drink and food cans;
- chairs and stools;
- eskies and hampers;
- fireworks;
- frisbees;
- helium balloons;
- glass (including bottles);
- large containers in excess of 1.5 litres;
- flags, banners or signs larger than 1.2 m wide or with handles longer than 50 cm in length;
- musical instruments and/or amplification equipment;
- unauthorised advertising or marketing material or flyers;
- laser pointers, distress signals, whistles or loud hailers;
- dangerous goods and any other item prohibited by legislation.

Note: prams and strollers are not permitted in seating areas.

Parking

Wilson (30 Hindley St) and **Adelaide Central Car Park** (225 North Terrace) are just a short walk over the bridge to War Memorial Drive.

Book now: <https://www.wilsonparking.com.au/find-a-park>

UPark on Gawler

Book now: <https://upark.com.au/locations/gawler/>

Adelaide Convention Centre

Book now: [the Riverbank Car Park and North Terrace Car Park](#)

Adelaide Oval Parking

> [Parking Map](#)

> [Adelaide Oval pre-book online here](#)

Accessible Car Parking

There will be limited parking available near the event site. Please note that there are some Big Bash Games on during the two weeks of the Adelaide International.

Non-Big Bash Games

There is some limited parking available near the event site. There is an accessibility drop off zone at the Adelaide Oval Plaza nearest the ticket window with the opportunity for parking at the east Gates of Adelaide Oval.

Big Bash Games

There is some limited accessibility parking opposite The Drive on War Memorial Drive.

There is also a drop off zone out the front of Next Gen Health Clubs, adjacent to Pinky Flat.

This must be accessed from the western side via Montefiore Road or Morphett Street Bridge (disability permit holder)

If accessibility car parking is required – please register details with the Event Helpdesk
sareception@tennis.com.au